

2. *P. TAVIUNENSIS*, Layard : Taviuni (*Layard*).
3. *P. SPLENDENS* (Peale) : Kandavu and Viti Levu (*Layard*).
4. *P. PERSONATA* (G. R. Gray) : Kandavu (*Layard*).

It seemed now quite certain, from the researches of Dr. E. Gräffe (*cf.* J. f. O. 1870, p. 416), that the true *P. tabuensis* was found in the Tonga group, not, indeed, on the island of Tongatabu, but on the adjoining island of Eua or Eoua of that group. Mr. Slater was therefore not yet quite convinced, in spite of what Messrs. Finsch and Hartlaub had stated (J. f. Orn. 1870, p. 123), that Peale's *P. atrigularis* (which he had identified, P. Z. S. 1864, p. 158, as applicable to Mr. Rayner's specimen from Ngau Island, Feejees) was certainly = *P. tabuensis*, unless, indeed, it should turn out that *P. tabuensis* had been introduced by the natives of the Tonga Islands from the Feejee group*.

The following papers were read :—

1. Descriptions of Lepidoptera from the Collection of Lieut. Howland Roberts. By ARTHUR G. BUTLER, F.L.S., F.Z.S., &c.

[Received February 21, 1876.]

(Plate XXII.)

The first two species here described were lent to me by Lieut. Roberts soon after his arrival in England ; but press of work has prevented me from determining their affinities until now.

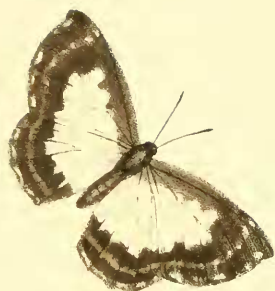
Family ERYCINIDÆ.

STIBOGES, n. gen.

Allied to *Abisara*, aspect of *Nymphidium*.

Wings with rounded outer margin broad, costal nervure of primaries terminating abruptly at about the middle of the costa, opposite to the end of the discoidal cell, subcostal with five branches, the last two forking to apex ; upper radial emitted from the inferior margin of the subcostal near its origin ; lower radial nearly equally dividing the discocellulars, which are concave ; second and third median branches emitted near together ; precostal of secondaries short, oblique, directed backwards ; costal nervure short, straight, oblique, terminating at basal third of costa ; subcostal forking beyond the

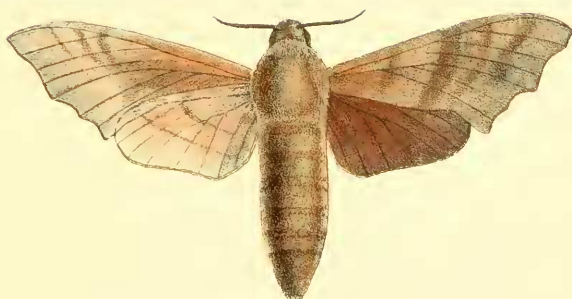
* Mr. Salvin kindly sends me an extract from the "Voyage in search of La Perouse" (translated from the French, 2 vols. 8vo, 1800) in illustration of this point. "On the morning of the 26th March we landed (on Tongataboo). . . . They (the natives) sold us several birds ; among others a charming species of Lory, which they assured us had been brought them from Fidgi."—*Tom. cit.* ii. p. 105.—P. L. S.



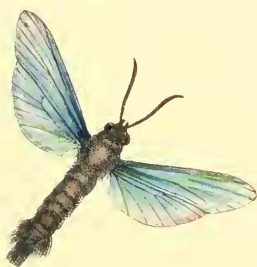
1.



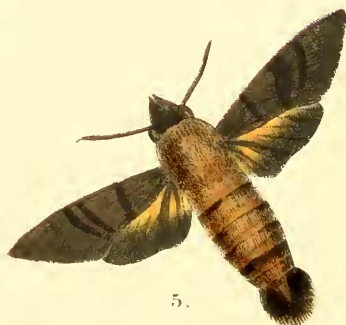
2.



3.



4.



5.

